



DISCOVERY®
ANTIBODIES

Data Sheet

Anti-SARS-CoV-2 Spike antibody

Product Description	Anti-SARS-CoV-2 Spike antibody corresponding to the polybasic cleavage site region within the Anti-SARS-CoV-2 Spike protein sequence
Cross reactivity	Human, rat, mouse, chicken
Antigen	KLH conjugated synthetic peptide crb1200514
Catalogue Number	crb2005280f
Batch Number	CRB246 K98 Gly
Host Species	Rabbit Polyclonal IgG
Formulation & Storage	Supplied in PBS containing 0.01% sodium azide and 1% trehalose. The product should be stored at -20°C
Quantity	100µg at 0.5mg/mL
Method of Preparation	Crude antiserum was purified by affinity chromatography using peptide specific antigen
Recommended Concentration	1:1000 (ELISA)
References	
Research Use	For research use only, not for use in diagnostic procedures

Certified by

Ling-I Su

Date: 07.07.2020

Information contained in this publication is believed to be accurate and is given in good faith, but it is for the User to satisfy itself of the suitability of the Product for its own particular purpose. CRB Ltd gives no warranty as to the fitness of the product and any implied warranty or condition (statutory or otherwise) is excluded except to the extent that exclusion is prevented by law.

CRB Ltd accepts no liability for loss or damage (other than that arising from death or personal injury caused by a defective Product, if proved), resulting from reliance on this information.

Discovery Antibodies® is a registered trade mark of Cambridge Research Biochemicals Limited registered in the UK

17-18 Belasis Court, Belasis Hall Technology Park, Billingham Cleveland, TS23 4AZ UK

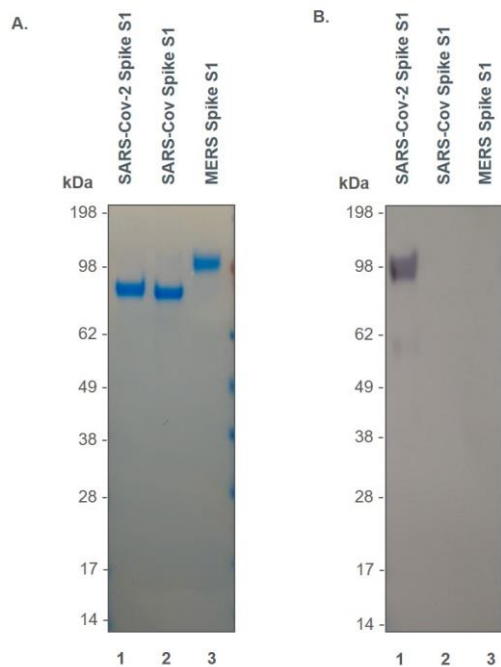
T. +44 (0) 1642 567 180 F. +44 (0) 1642 567 181 E. crbsales@crbdiscovery.com

Registered in England No. 3888024. Registered Office: Cambridge Research Biochemicals Limited
17-19 Belasis Court, Belasis Hall Technology Park, Billingham Cleveland, TS23 4AZ, United Kingdom



Anti-SARS-CoV-2 Spike antibody

Validation



Anti-SARS-CoV-2 Spike protein antibody (crb2005280) K98

A. SDS PAGE and Coomassie stain and B. western blot analysis of 500ng Spike S1 Recombinant protein.

Lane 1: SARS-Cov-2 Spike S1 protein
Lane 2: SARS-Cov Spike S1 protein
Lane 3: MERS Spike S1 protein

Expected sizes: SARS-Cov-2 spike S1, 76.41 kDa; SARS-Cov spike S1, 74.4 kDa; MERS Cov spike S1 80 kDa.

Western blot image provided courtesy of CPI.

Material Safety Data

THIS PRODUCT IS FOR RESEARCH USE ONLY AND IS NOT INTENDED FOR DIAGNOSTIC, THERAPEUTIC OR HUMAN USE

It is recommended that this material be handled by persons trained in laboratory techniques. Standard Laboratory Practices should be followed when handling this material.

The toxicological properties of this material have not been thoroughly investigated. Appropriate measures should be taken to avoid skin and eye contact, inhalation and ingestion. In case of contact with skin or eyes, wash immediately with water. In case of ingestion or inhalation, medical advice should be sought.

Information contained in this publication is believed to be accurate and is given in good faith, but it is for the User to satisfy itself of the suitability of the Product for its own particular purpose. CRB Ltd gives no warranty as to the fitness of the product and any implied warranty or condition (statutory or otherwise) is excluded except to the extent that exclusion is prevented by law.

CRB Ltd accepts no liability for loss or damage (other than that arising from death or personal injury caused by a defective Product, if proved), resulting from reliance on this information.

Discovery Antibodies® is a registered trade mark of Cambridge Research Biochemicals Limited registered in the UK

17-18 Belasis Court, Belasis Hall Technology Park, Billingham Cleveland, TS23 4AZ UK

T. +44 (0) 1642 567 180 F. +44 (0) 1642 567 181 E. crbsales@crbdiscovery.com

Registered in England No. 3888024. Registered Office: Cambridge Research Biochemicals Limited
17-19 Belasis Court, Belasis Hall Technology Park, Billingham Cleveland, TS23 4AZ, United Kingdom