



DISCOVERY®
ANTIBODIES

Data Sheet

Anti-crc antibody

Product Description	Anti-crc antibody corresponding to a region within the cryptocephal (crc) protein sequence
Cross reactivity	Drosophila melanogaster
Antigen	Recombinant protein
Catalogue Number	crb2005253f
Batch Number	CRB0220 (328)
Host Species	Rabbit Polyclonal IgG
Formulation & Storage	The product should be stored at -20°C for for short term storage and long term storage. Avoid repeated freeze/ thaw cycles.
Quantity	100µl
Method of Preparation	serum
Recommended Concentration Validation	1:1000 (WB), 1:1000 (ELISA) Please see overleaf
References	
Research Use	For research use only, not for use in diagnostic procedures

Certified by

Ling-I Su

Date: 29th August 2018

Information contained in this publication is believed to be accurate and is given in good faith, but it is for the User to satisfy itself of the suitability of the Product for its own particular purpose. CRB Ltd gives no warranty as to the fitness of the product and any implied warranty or condition (statutory or otherwise) is excluded except to the extent that exclusion is prevented by law.

CRB Ltd accepts no liability for loss or damage (other than that arising from death or personal injury caused by a defective Product, if proved), resulting from reliance on this information.

Discovery Antibodies® is a registered trade mark of Cambridge Research Biochemicals Limited registered in the UK

17-18 Belasis Court, Belasis Hall Technology Park, Billingham Cleveland, TS23 4AZ UK

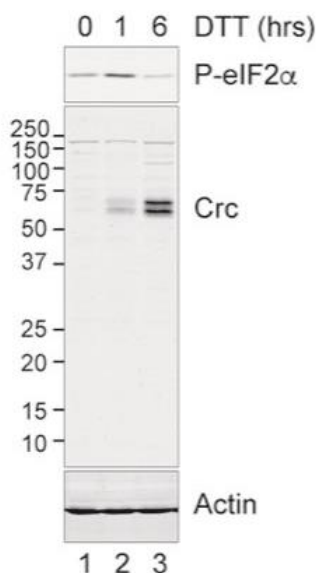
T. +44 (0) 1642 567 180 F. +44 (0) 1642 567 181 E. crbsales@crbdiscovery.com

Registered in England No. 3888024. Registered Office: Cambridge Research Biochemicals Limited
17-19 Belasis Court, Belasis Hall Technology Park, Billingham Cleveland, TS23 4AZ, United Kingdom



Anti-crc antibody

Validation



Anti-crc antibody (crb2005253) (1:1000)

Western blot analysis of nuclear extract of *Drosophila* Schneider 2 cells (S2 cells) (50 μ g) treated with 2mM DTT to induced by ER stress.

Lane 1: S2 cells

Lane 2: S2 cells treated with 1h 2mM DTT

Lane 3: S2 cells treated with 6h 2mM DTT

Secondary: IRDye[®] 800CW Goat anti-Rabbit IgG 1:2000

Image provided courtesy of Dr. Stefan Marciniak Laboratory, Cambridge Institute for Medical Research (CIMR).

Material Safety Data

THIS PRODUCT IS FOR RESEARCH USE ONLY AND IS NOT INTENDED FOR DIAGNOSTIC, THERAPEUTIC OR HUMAN USE

It is recommended that this material be handled by persons trained in laboratory techniques. Standard Laboratory Practices should be followed when handling this material.

The toxicological properties of this material have not been thoroughly investigated. Appropriate measures should be taken to avoid skin and eye contact, inhalation and ingestion. In case of contact with skin or eyes, wash immediately with water. In case of ingestion or inhalation, medical advice should be sought.

Information contained in this publication is believed to be accurate and is given in good faith, but it is for the User to satisfy itself of the suitability of the Product for its own particular purpose. CRB Ltd gives no warranty as to the fitness of the product and any implied warranty or condition (statutory or otherwise) is excluded except to the extent that exclusion is prevented by law.

CRB Ltd accepts no liability for loss or damage (other than that arising from death or personal injury caused by a defective Product, if proved), resulting from reliance on this information.

Discovery Antibodies[®] is a registered trade mark of Cambridge Research Biochemicals Limited registered in the UK

17-18 Belasis Court, Belasis Hall Technology Park, Billingham Cleveland, TS23 4AZ UK

T. +44 (0) 1642 567 180 F. +44 (0) 1642 567 181 E. crbsales@crbdiscovery.com

Registered in England No. 3888024. Registered Office: Cambridge Research Biochemicals Limited
17-19 Belasis Court, Belasis Hall Technology Park, Billingham Cleveland, TS23 4AZ, United Kingdom