



DISCOVERY®  
ANTIBODIES

## Data Sheet

### Anti-SLC15A4 antibody (Rabbit Polyclonal IgG)

---

|                           |   |
|---------------------------|---|
| Product Name              | Anti-SLC15A4 antibody corresponding to a region within the human SLC15A4 protein sequence             |
| Selectivity               | Human   |
| Antigen                   | KLH conjugated synthetic peptide crb1200370e  |
| Catalogue Number          | crb2005113f   |
| Batch Number              | crb091  |
| Formulation & Storage     | Supplied in PBS containing 0.01% sodium azide and 1% trehalose. The product should be stored at -20°C |
| Quantity                  | 100µg at 0.2mg/ml   |
| Method of Preparation     | Crude antiserum was purified by affinity chromatography using peptide specific antigen                |
| Recommended Concentration | 1:1000 (WB), 1:1000 (ELISA)   |
| Specifications            | Please see overleaf   |
| References                |   |
| Research Use              | For research use only, not for use in diagnostic procedures   |

---

Certified by

*Ling-I Su*

Date: 5<sup>th</sup> March 2018

Information contained in this publication is believed to be accurate and is given in good faith, but it is for the User to satisfy itself of the suitability of the Product for its own particular purpose. CRB Ltd gives no warranty as to the fitness of the product and any implied warranty or condition (statutory or otherwise) is excluded except to the extent that exclusion is prevented by law.

CRB Ltd accepts no liability for loss or damage (other than that arising from death or personal injury caused by a defective Product, if proved), resulting from reliance on this information.

Discovery Antibodies® is a registered trade mark of Cambridge Research Biochemicals Limited registered in the UK

17-18 Belasis Court, Belasis Hall Technology Park, Billingham Cleveland, TS23 4AZ UK

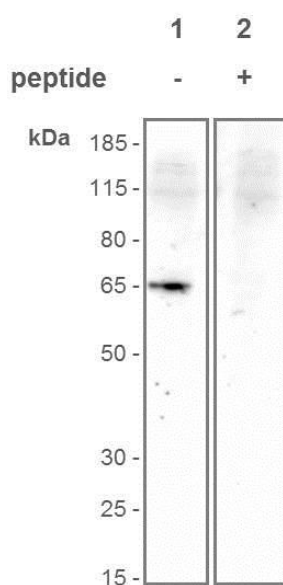
T. +44 (0) 1642 567 180 F. +44 (0) 1642 567 181 E. [crbsales@crbdiscovery.com](mailto:crbsales@crbdiscovery.com)

Registered in England No. 3888024. Registered Office: Cambridge Research Biochemicals Limited  
17-19 Belasis Court, Belasis Hall Technology Park, Billingham Cleveland, TS23 4AZ, United Kingdom



## Anti-SLC15A4 antibody (Rabbit Polyclonal IgG)

### Specifications



**Anti-SLC15A4 antibody (crb2005113)(1µg/ml)**  
Molecular weight: ~62KDa

Western blot analysis of human prostate adenocarcinoma (PC-3) whole cell extract (20µg).

**Lane 1:** PC-3 cells, **anti-SLC15A4 antibody** (1µg/ml) detects SLC15A4.

**Lane 2:** PC-3 cells, **anti-SLC15A4 antibody** (1µg/ml) pre-absorbed with the antigenic peptide (crb1200375e) at 1µg/ml competitively inhibits binding of SLC15A4.

**Secondary:** Goat anti-rabbit IgG conjugated to HRP dilution 1:2500

### Material Safety Data

#### THIS PRODUCT IS FOR RESEARCH USE ONLY AND IS NOT INTENDED FOR DIAGNOSTIC, THERAPEUTIC OR HUMAN USE

It is recommended that this material be handled by persons trained in laboratory techniques. Standard Laboratory Practices should be followed when handling this material.

The toxicological properties of this material have not been thoroughly investigated. Appropriate measures should be taken to avoid skin and eye contact, inhalation and ingestion. In case of contact with skin or eyes, wash immediately with water. In case of ingestion or inhalation, medical advice should be sought.

Information contained in this publication is believed to be accurate and is given in good faith, but it is for the User to satisfy itself of the suitability of the Product for its own particular purpose. CRB Ltd gives no warranty as to the fitness of the product and any implied warranty or condition (statutory or otherwise) is excluded except to the extent that exclusion is prevented by law.

CRB Ltd accepts no liability for loss or damage (other than that arising from death or personal injury caused by a defective Product, if proved), resulting from reliance on this information.

Discovery Antibodies<sup>®</sup> is a registered trade mark of Cambridge Research Biochemicals Limited registered in the UK

17-18 Belasis Court, Belasis Hall Technology Park, Billingham Cleveland, TS23 4AZ UK

T. +44 (0) 1642 567 180 F. +44 (0) 1642 567 181 E. crbsales@crbdiscovery.com

Registered in England No. 3888024. Registered Office: Cambridge Research Biochemicals Limited  
17-19 Belasis Court, Belasis Hall Technology Park, Billingham Cleveland, TS23 4AZ, United Kingdom