



DISCOVERY®  
ANTIBODIES

## Data Sheet

### Anti-GluR1 antibody

Product Name	Anti-GluR1 antibody corresponding to a region within the human GluR1 protein sequence.
Selectivity	Human, Rat, Mouse
Antigen	KLH conjugated synthetic peptide crb1200335e
Catalogue Number	crb2005075f
Batch Number	crb096
Host Species	Rabbit Polyclonal IgG
Formulation & Storage	Supplied in PBS containing 0.01% sodium azide and 1% trehalose. The product should be stored at -20°C.
Quantity	100µg at 1mg/ml
Method of Preparation	Crude antiserum was purified by affinity chromatography using peptide specific antigen
Recommended Concentration	1:1000 (WB), 1:1000 (ELISA), 1:16,000 IHC
Specifications	Please see overleaf
References	Banke <i>et al.</i> (2000). <i>J Neurosci.</i> <b>20</b> (1):89-102. Inglis <i>et al.</i> (2002). <i>J Neurosci.</i> <b>22</b> (18):8042-51. Lee <i>et al.</i> (2003). <i>Cell.</i> <b>112</b> (5):631-43.
Research Use	For research use only, not for use in diagnostic procedures

Certified by

*Natasha Lethbridge*

Date: 06 Mar 2017

Information contained in this publication is believed to be accurate and is given in good faith, but it is for the User to satisfy itself of the suitability of the Product for its own particular purpose. CRB Ltd gives no warranty as to the fitness of the product and any implied warranty or condition (statutory or otherwise) is excluded except to the extent that exclusion is prevented by law.

CRB Ltd accepts no liability for loss or damage (other than that arising from death or personal injury caused by a defective Product, if proved), resulting from reliance on this information.



Discovery Antibodies® is a registered trade mark of Cambridge Research Biochemicals Limited registered in the UK

17-18 Belasis Court, Belasis Hall Technology Park, Billingham Cleveland, TS23 4AZ UK  
T. +44 (0) 1642 567 180 F. +44 (0) 1642 567 181 E. crbsales@crbdiscovery.com

Registered in England No. 3888024. Registered Office: Cambridge Research Biochemicals Limited  
17-19 Belasis Court, Belasis Hall Technology Park, Billingham Cleveland, TS23 4AZ, United Kingdom

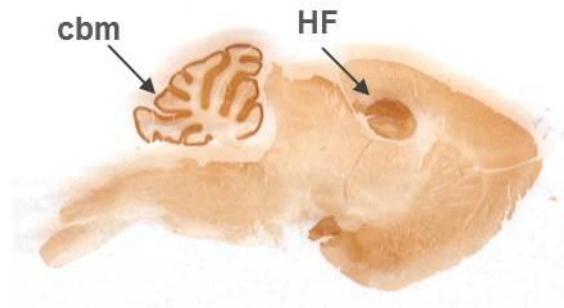


DISCOVERY®  
ANTIBODIES

# Data Sheet

## Anti-GluR1 antibody

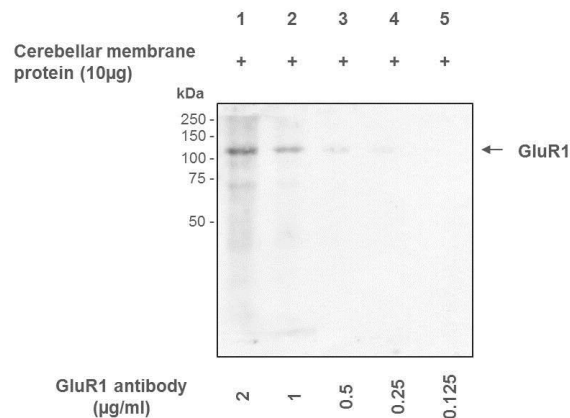
### Specifications



**Anti-GluR1 antibody (crb2005075f)**  
(0.0625µg/ml)

Immunohistochemistry analysis of Paraformaldehyde-fixed mouse brain section.

Strong immunoreactivity in the cerebellar molecular layer (cbm) and hippocampal formation (HF) characteristic of GluR1 distribution.



**Anti-GluR1 antibody (crb2005075f)**  
At various concentrations 0.5-2µg/ml  
**Molecular weight: ~101kDa**

Western blot analysis of mouse cerebellar membrane protein with anti-GluR1 antibody .

**Lane 1-5:** Mouse cerebellar membrane protein (10 µg).

Western blot and IHC images provided courtesy of Dr. Christopher L. Thompson, Durham University.

### Material Safety Data

#### THIS PRODUCT IS FOR RESEARCH USE ONLY AND IS NOT INTENDED FOR DIAGNOSTIC, THERAPEUTIC OR HUMAN USE

It is recommended that this material be handled by persons trained in laboratory techniques. Standard Laboratory Practices should be followed when handling this material.

The toxicological properties of this material have not been thoroughly investigated. Appropriate measures should be taken to avoid skin and eye contact, inhalation and ingestion. In case of contact with skin or eyes, wash immediately with water. In case of ingestion or inhalation, medical advice should be sought.

Information contained in this publication is believed to be accurate and is given in good faith, but it is for the User to satisfy itself of the suitability of the Product for its own particular purpose. CRB Ltd gives no warranty as to the fitness of the product and any implied warranty or condition (statutory or otherwise) is excluded except to the extent that exclusion is prevented by law.

CRB Ltd accepts no liability for loss or damage (other than that arising from death or personal injury caused by a defective Product, if proved), resulting from reliance on this information.



Discovery Antibodies® is a registered trade mark of Cambridge Research Biochemicals Limited registered in the UK

17-18 Belasis Court, Belasis Hall Technology Park, Billingham Cleveland, TS23 4AZ UK  
T. +44 (0) 1642 567 180 F. +44 (0) 1642 567 181 E. crbsales@crbdiscovery.com

Registered in England No. 3888024. Registered Office: Cambridge Research Biochemicals Limited  
17-19 Belasis Court, Belasis Hall Technology Park, Billingham Cleveland, TS23 4AZ, United Kingdom