



DISCOVERY®
ANTIBODIES

Data Sheet

Anti-ERK1/2 antibody

Product Description	Anti-ERK1/2 antibody corresponding to a region within the ERK1 protein sequence
Cross reactivity	Human, mouse, rat
Antigen	KLH conjugated synthetic peptide crb1200306e
Catalogue Number	crb2005025f
Batch Number	crb020
Host Species	Rabbit Polyclonal IgG
Formulation & Storage	Supplied in PBS containing 0.01% sodium azide and 1% trehalose. The product should be stored at -20°C
Quantity	100µg at 1mg/ml
Method of Preparation	Crude antiserum was purified by affinity chromatography using peptide specific antigen
Recommended Concentration	1:1000 (WB), 1:1000 (ELISA)
Validation	Please see overleaf
References	Tang <i>et al.</i> (2002). <i>J Biol Chem.</i> 277 (15):12710-7. Roskoski R Jr1. (2012) <i>Pharmacol Res.</i> 66 (2):105-43. Kolch W. (2005). <i>Nat Rev Mol Cell Biol.</i> 6 (11):827-37.
Research Use	For research use only, not for use in diagnostic procedures

Certified by

Natasha Lettbridge

Date: 1st Nov 2016

Information contained in this publication is believed to be accurate and is given in good faith, but it is for the User to satisfy itself of the suitability of the Product for its own particular purpose. CRB Ltd gives no warranty as to the fitness of the product and any implied warranty or condition (statutory or otherwise) is excluded except to the extent that exclusion is prevented by law.

CRB Ltd accepts no liability for loss or damage (other than that arising from death or personal injury caused by a defective Product, if proved), resulting from reliance on this information.



Discovery Antibodies® is a registered trade mark of Cambridge Research Biochemicals Limited registered in the UK

17-18 Belasis Court, Belasis Hall Technology Park, Billingham Cleveland, TS23 4AZ UK
T. +44 (0) 1642 567 180 F. +44 (0) 1642 567 181 E. crbsales@crbdiscovery.com

Registered in England No. 3888024. Registered Office: Cambridge Research Biochemicals Limited
17-19 Belasis Court, Belasis Hall Technology Park, Billingham Cleveland, TS23 4AZ, United Kingdom

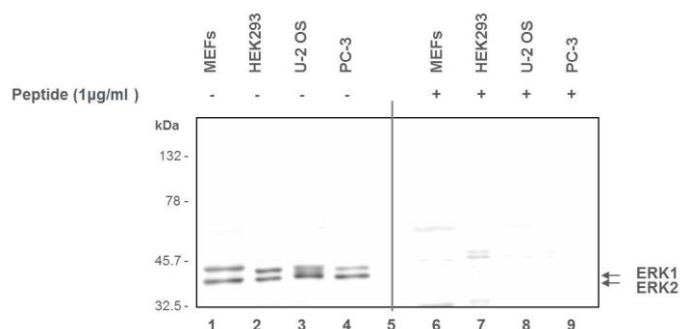


DISCOVERY®
ANTIBODIES

Data Sheet

Anti-ERK1/2 antibody

Validation



Anti-ERK1/2 antibody (crb2005025f) (1µg/ml) Molecular weight: ~42kDa, ~44kDa

Western blot analysis of whole cell extract of Mouse embryonic Fibroblasts (MEFs), human embryonic kidney (HEK293), human osteocarcinoma (U-2 OS), human prostate adenocarcinoma (PC-3) (20µg).

Lane 1-4: MEFs, HEK 293, U-2 OS and PC-3 respectively, **Anti- ERK1/2 antibody** (1µg/ml) detects both ERK1 and ERK2.

Lane 6-9: MEFs, HEK 293, U-2 OS and PC-3 respectively, **Anti- ERK1/2 antibody** (1µg/ml) pre-absorbed with the antigenic peptide (crb1200306e) at 1µg/ml competitively inhibits binding of ERK1 and ERK2.

Secondary: Goat anti-rabbit IgG conjugated to HRP 1:2500

Material Safety Data

THIS PRODUCT IS FOR RESEARCH USE ONLY AND IS NOT INTENDED FOR DIAGNOSTIC, THERAPEUTIC OR HUMAN USE

It is recommended that this material be handled by persons trained in laboratory techniques. Standard Laboratory Practices should be followed when handling this material.

The toxicological properties of this material have not been thoroughly investigated. Appropriate measures should be taken to avoid skin and eye contact, inhalation and ingestion. In case of contact with skin or eyes, wash immediately with water. In case of ingestion or inhalation, medical advice should be sought.

Information contained in this publication is believed to be accurate and is given in good faith, but it is for the User to satisfy itself of the suitability of the Product for its own particular purpose. CRB Ltd gives no warranty as to the fitness of the product and any implied warranty or condition (statutory or otherwise) is excluded except to the extent that exclusion is prevented by law.

CRB Ltd accepts no liability for loss or damage (other than that arising from death or personal injury caused by a defective Product, if proved), resulting from reliance on this information.



Discovery Antibodies® is a registered trade mark of Cambridge Research Biochemicals Limited registered in the UK

17-18 Belasis Court, Belasis Hall Technology Park, Billingham Cleveland, TS23 4AZ UK
T. +44 (0) 1642 567 180 F. +44 (0) 1642 567 181 E. crbsales@crbdiscovery.com

Registered in England No. 3888024. Registered Office: Cambridge Research Biochemicals Limited
17-19 Belasis Court, Belasis Hall Technology Park, Billingham Cleveland, TS23 4AZ, United Kingdom