



DISCOVERY®
ANTIBODIES

Data Sheet

Anti-phosphorylated CDK2 (pY15) antibody (Rabbit Polyclonal IgG)

Product Description	Anti-phosphorylated CDK2 (pY15) antibody corresponding to a region within the human CDK2 (Y15) protein sequence
Cross reactivity	Human, mouse, rat
Antigen	KLH conjugated synthetic peptide crb1200292e
Catalogue Number	crb2005014e
Batch Number	crb007 rabbit 6411
Formulation & Storage	Supplied in PBS containing 0.01% sodium azide and 1% trehalose. The product should be stored at -20°C
Quantity	50µg at 1mg/ml
Method of Preparation	Crude antiserum was purified by affinity chromatography using peptide specific antigen
Recommended Concentration	1:500 (WB), 1:1000 (ELISA)
Validation	Please see overleaf
References	Gu <i>et al.</i> (1992) <i>EMBO J.</i> 11(11):3995-4005. Bártová <i>et al.</i> (2004) <i>Protein Sci.</i> 13(6):1449-57. Welburn <i>et al.</i> (2007) <i>J Biol Chem.</i> 282(5):3173-81.
Research Use	For research use only, not for use in diagnostic procedures

Certified by

Natasha Lettbridge

Date: 1st Nov 2016

Information contained in this publication is believed to be accurate and is given in good faith, but it is for the User to satisfy itself of the suitability of the Product for its own particular purpose. CRB Ltd gives no warranty as to the fitness of the product and any implied warranty or condition (statutory or otherwise) is excluded except to the extent that exclusion is prevented by law.

CRB Ltd accepts no liability for loss or damage (other than that arising from death or personal injury caused by a defective Product, if proved), resulting from reliance on this information.



Discovery Antibodies® is a registered trade mark of Cambridge Research Biochemicals Limited registered in the UK

17-18 Belasis Court, Belasis Hall Technology Park, Billingham Cleveland, TS23 4AZ UK
T. +44 (0) 1642 567 180 F. +44 (0) 1642 567 181 E. crbsales@crbdiscovery.com

Registered in England No. 3888024. Registered Office: Cambridge Research Biochemicals Limited
17-19 Belasis Court, Belasis Hall Technology Park, Billingham Cleveland, TS23 4AZ, United Kingdom

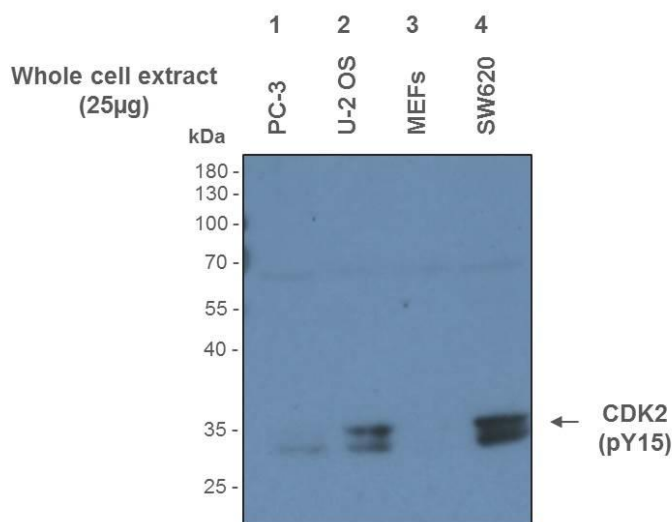


DISCOVERY®
ANTIBODIES

Data Sheet

Anti-phosphorylated CDK2 (pY15) antibody (Rabbit Polyclonal IgG)

Validation



Anti-phosphorylated CDK2 (pY15) antibody (crb2005014e) (2 µg/ml)
Molecular weight: ~34kDa

Western blot analysis of whole cell extract of human prostate adenocarcinoma (PC-3), human osteocarcinoma (U-2 OS), Mouse Embryonic Fibroblasts protein (MEFs) and human colon adenocarcinoma (SW620) (25µg).

Lane 1: Human PC-3 protein (25µg).

Lane 2: Human U-2 OS protein (25µg).

Lane 3: Mouse Embryonic Fibroblasts protein (25µg).

Lane 4: Human SW620 protein (25µg).

Secondary: Goat anti-rabbit IgG conjugated to HRP 1:5000.

Western blot image provided courtesy of Prof. Neil Perkins Laboratory, Newcastle University.

Material Safety Data

THIS PRODUCT IS FOR RESEARCH USE ONLY AND IS NOT INTENDED FOR DIAGNOSTIC, THERAPEUTIC OR HUMAN USE

It is recommended that this material be handled by persons trained in laboratory techniques. Standard Laboratory Practices should be followed when handling this material.

The toxicological properties of this material have not been thoroughly investigated. Appropriate measures should be taken to avoid skin and eye contact, inhalation and ingestion. In case of contact with skin or eyes, wash immediately with water. In case of ingestion or inhalation, medical advice should be sought.

Information contained in this publication is believed to be accurate and is given in good faith, but it is for the User to satisfy itself of the suitability of the Product for its own particular purpose. CRB Ltd gives no warranty as to the fitness of the product and any implied warranty or condition (statutory or otherwise) is excluded except to the extent that exclusion is prevented by law.

CRB Ltd accepts no liability for loss or damage (other than that arising from death or personal injury caused by a defective Product, if proved), resulting from reliance on this information.



Discovery Antibodies® is a registered trade mark of Cambridge Research Biochemicals Limited registered in the UK

17-18 Belasis Court, Belasis Hall Technology Park, Billingham Cleveland, TS23 4AZ UK
T. +44 (0) 1642 567 180 F. +44 (0) 1642 567 181 E. crbsales@crbdiscovery.com

Registered in England No. 3888024. Registered Office: Cambridge Research Biochemicals Limited
17-19 Belasis Court, Belasis Hall Technology Park, Billingham Cleveland, TS23 4AZ, United Kingdom